

Screen Snap Shots of WEM-MX Meter's Web Server and ET Analytics.

Dated: April 14, 2011,

Updated: February 8, 2012

Direct access via MS Internet Explorer to the WEM-MX's Web Server:

Home Page:

Meter ID	1111111100409D476146
Meter Address	WEM Location
Meter Time (mm/dd/yy)	04/14/11 22:31 Thu
Serial Number	111100409D476146
Version	090410_MX333_H
MAC	00:40:9D:47:61:46
OnLine Mins.	10446

Real Time Data 1: (One second snap shot of key parameters)

Energy Tracking: WEM-MX 333mV			
Phase	VOLTAGE	CURRENT	POWER FACTOR
PH_A:	120.104	14.967	0.500
PH_B:	120.104	14.944	0.500
PH_C:	120.104	14.956	0.500
Phase	Wh	VARh	VA
PH_A:	896.400	1555.200	1796.400
PH_B:	896.400	1551.600	1792.800
PH_C:	896.400	1555.200	1796.400
TOTALS:	2689.200	4662.000	5385.600
DELIVERED:	2689.200	4662.000	
RECEIVED:	0.000	0.000	
SUM:	2689.200	4662.000	
NET:	2689.200	4662.000	
FREQUENCY:	59.90		

Current Month: (Continuous tracking of kWh, kVARh and Peak Demands with time stamp.)

Meter ID	1111111100409D476146
Meter Address	WEM Location
Meter Time (mm/dd/yy)	04/14/11 22:35 Thu

Current Month	
Demand Interval	15
Num. of Sub-Intervals	0
Current Season	0
Current Tier	A
Number of Demand Resets	1
Max.kW Delivered	8.330 04/14/11 15:39
Cum.kW Delivered	0.000
Cont.Cum.kW Delivered	8.330
Max.kVAR Delivered	1.324 04/13/11 23:24
Cum.kVAR Delivered	0.000
Cont.Cum.kVAR Delivered	1.324
kWh Delivered	14.997
kVARh Delivered	1.258

Load Profile Reporting:

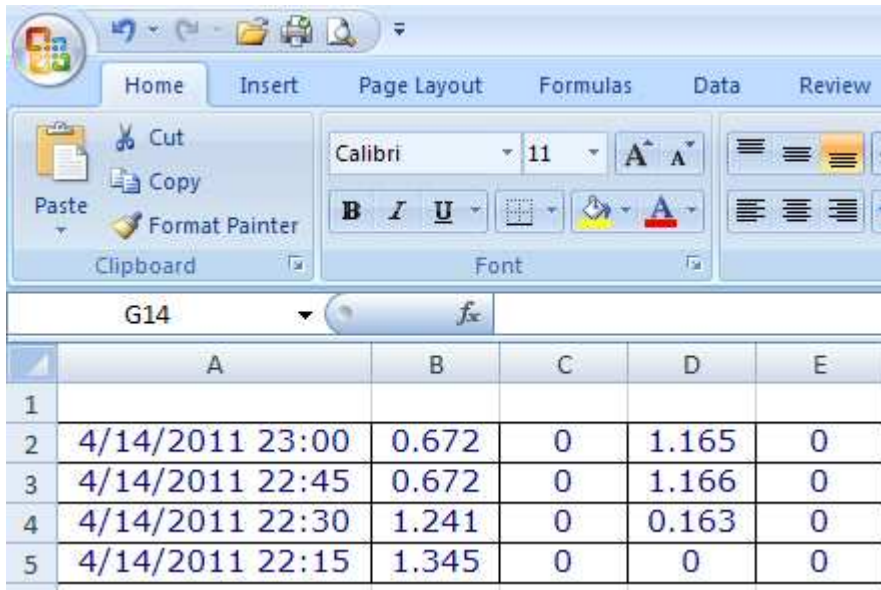
Format: Time Stamp, kWh Delivered, kWh Received, kVARh Delivered, kVARh Received

Time (mm.dd.yyyy)	Ch 1	Ch 2	Ch 3	Ch 4
04/14/2011 23:00:00	0.672	0.000	1.165	0.000
04/14/2011 22:45:00	0.672	0.000	1.166	0.000
04/14/2011 22:30:00	1.241	0.000	0.163	0.000
04/14/2011 22:15:00	1.345	0.000	0.000	0.000
04/14/2011 22:00:00	1.347	0.000	0.000	0.000
04/14/2011 21:45:00	1.346	0.000	0.000	0.000

User can select from 1 minute to 60 minutes logging interval.

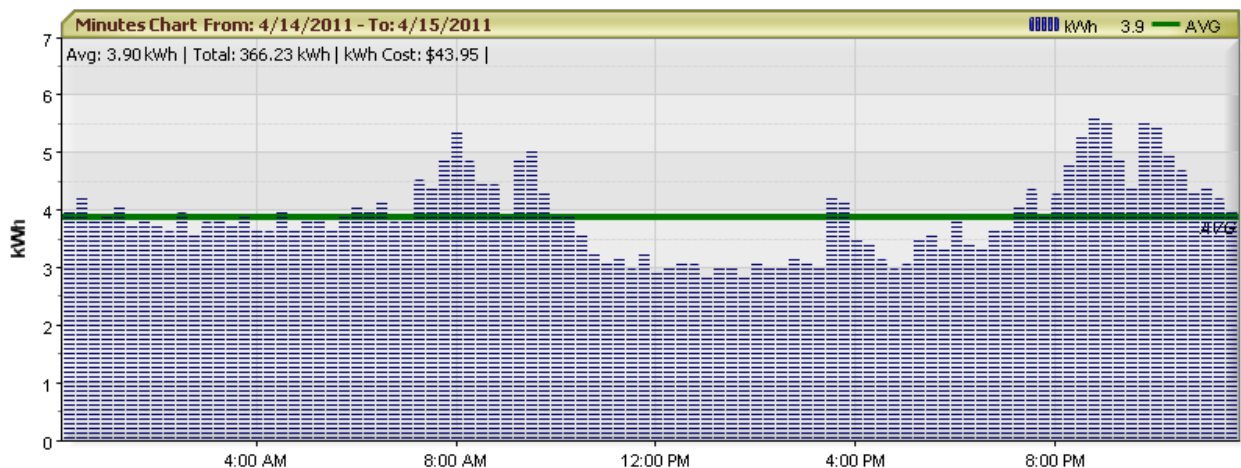
Select Data from Web Page and Copy-Paste to MS Excel:

Time (mm.dd.yyyy)	Ch 1	Ch 2	Ch 3	Ch 4
04/14/2011 23:00:00	0.672	0.000	1.165	0.000
04/14/2011 22:45:00	0.672	0.000	1.166	0.000
04/14/2011 22:30:00	1.241	0.000	0.163	0.000
04/14/2011 22:15:00	1.345	0.000	0.000	0.000

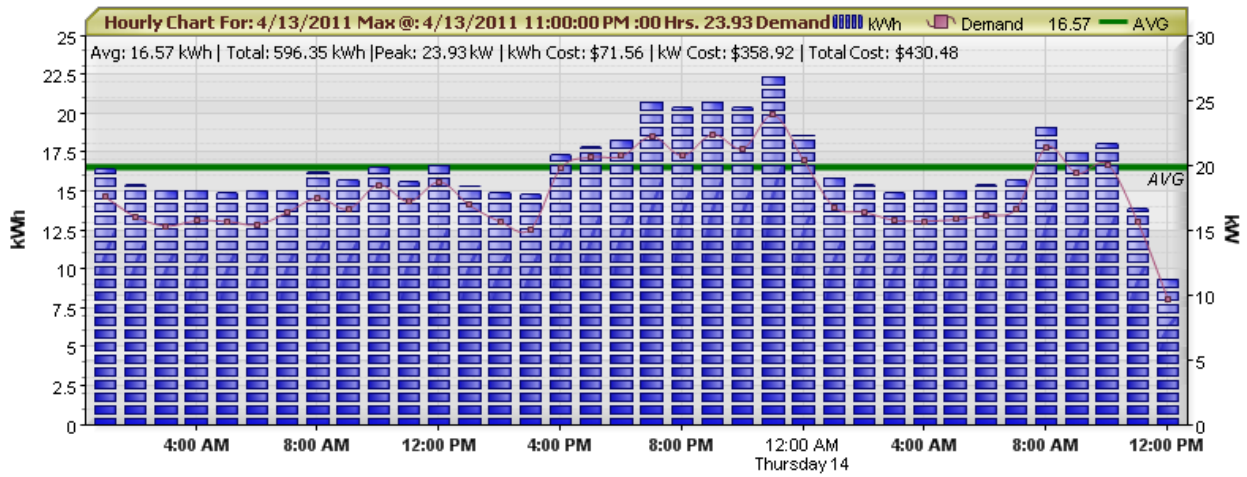


Hosted Solutions at ET Analytics: Data from meters can be sent to ET Analytics which is a Web Portal. The following screen shots are from ET Analytics.

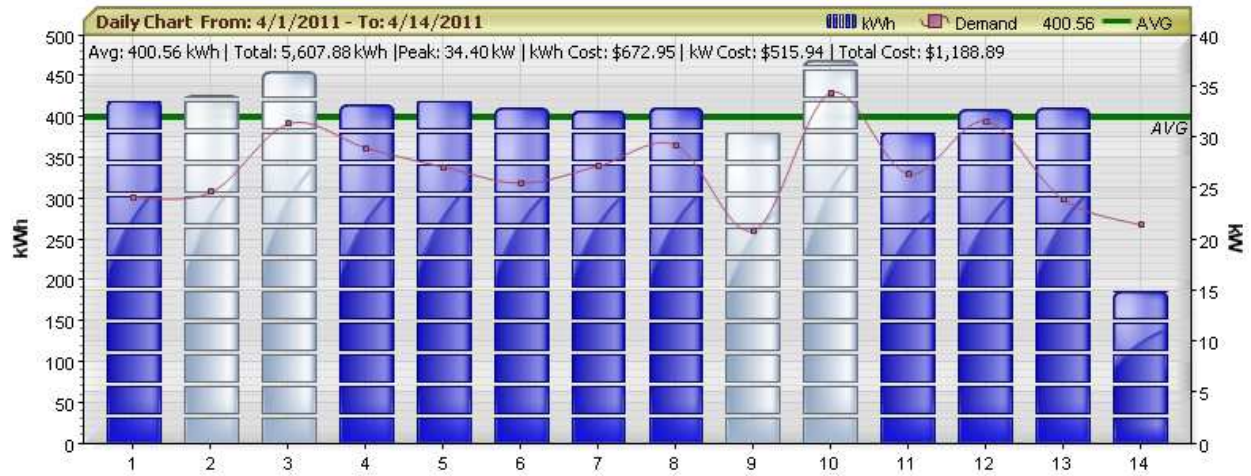
Interval Data Chart:



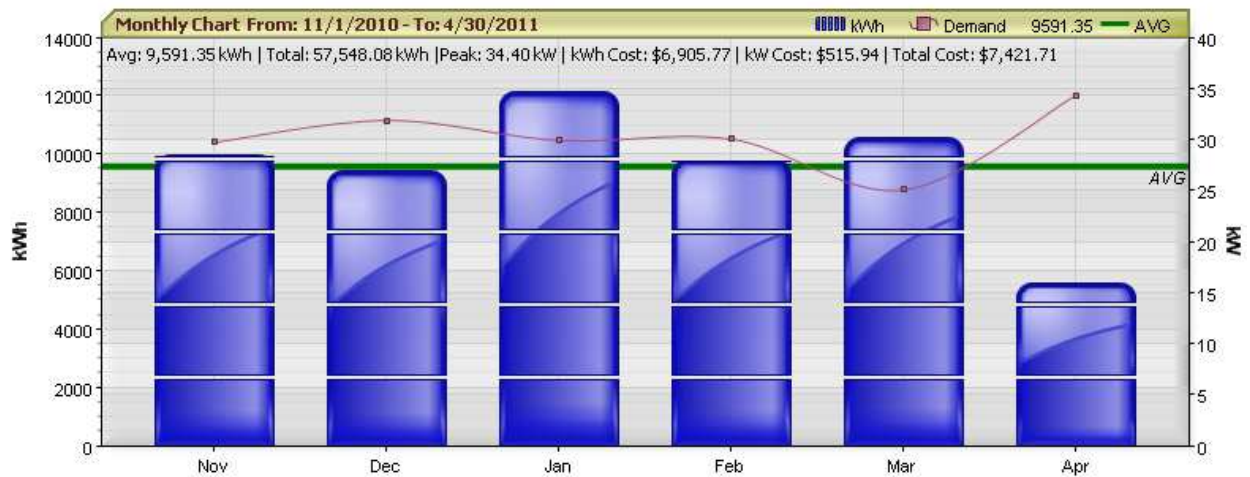
Hourly Chart:



Daily Chart:




Monthly Chart:



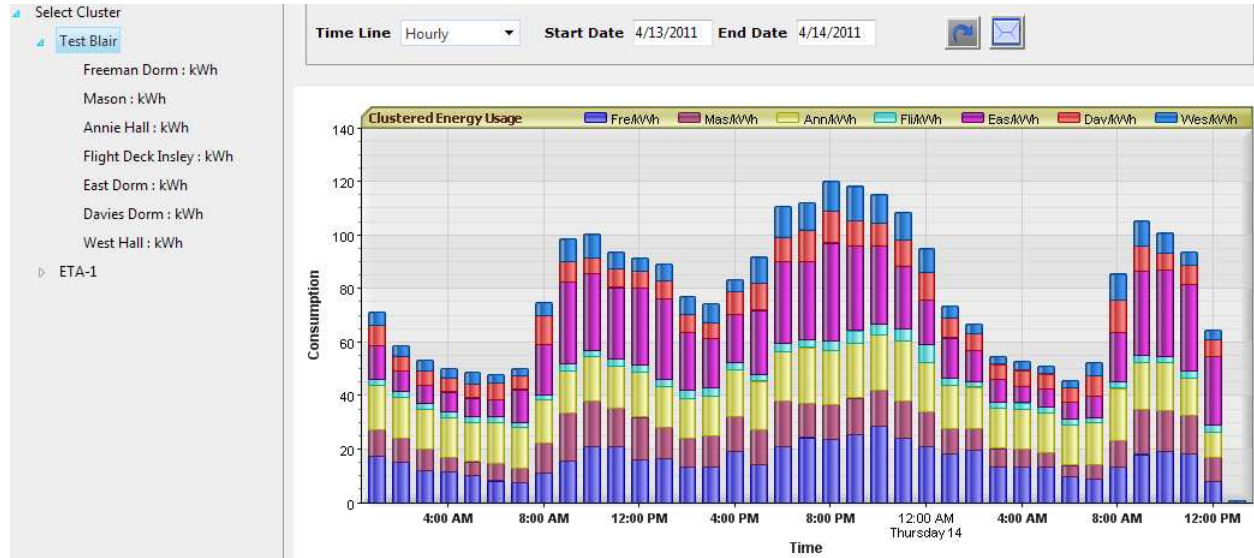
Usage Readings:

Hide Statistics			
Report Time 4/14/2011 11:30:00 PM			
	Voltage	Current	Power Factor
PHASE A	122.79	50.75	0.89
PHASE B	122.05	47.95	0.9
PHASE C	122.34	49.58	0.77
Frequency	60		
Demand Details			
Last Month Peak Demand	25.132 @ 3/4/2011 8:59:00 PM		
Last Interval Demand	15.954		
Current Demand	15.4		
Usage Details			
	kWh	kVARh	
Last Month	10566.252	7888.423	
Current Month	5788.088	3791.042	

Export Usage Data to Excel:

Hide Consumption Detail			Total Consumption: 366.23
 export			
Time Stamp	Day	Consumption	
4/14/2011 12:15:00 AM	Thursday	3.999	
4/14/2011 12:30:00 AM	Thursday	4.207	
4/14/2011 12:45:00 AM	Thursday	3.844	
4/14/2011 1:00:00 AM	Thursday	3.902	
4/14/2011 1:15:00 AM	Thursday	4.103	
4/14/2011 1:30:00 AM	Thursday	3.733	
4/14/2011 1:45:00 AM	Thursday	3.828	
4/14/2011 2:00:00 AM	Thursday	3.749	

Cluster Multiple Meters and Chart:



Cluster Charting Details with Export to Excel:

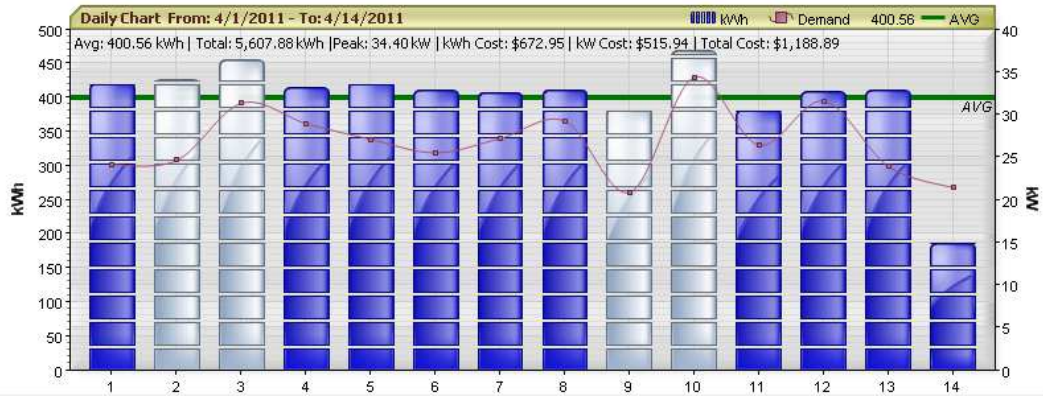
Hide Cluster Details

export

Date/ Time	4/13/2011 1:00:00 AM	4/13/2011 2:00:00 AM	4/13/2011 3:00:00 AM	4/13/2011 4:00:00 AM	4/13/2011 5:00:00 AM	4/13/2011 6:00:00 AM	4/13/2011 7:00:00 AM	4/13/2011 8:00:00 AM	4/13/2011 9:00:00 AM	4/13/2011 10:00:00 AM	4/13/2011 11:00:00 AM	4/13/2011 12:00:00 PM	4/13/2011 1:00:00 PM	4/13/2011 2:00:00 PM
Freeman Dorm/kWh	17.58	15.18	12.28	11.48	10.50	8.24	7.72	11.00	15.51	21.12	20.91	16.32	16.79	13.52
Mason/kWh	10.00	9.09	7.92	5.60	4.92	6.80	5.36	11.34	18.13	17.10	14.78	15.72	11.62	10.75
Annie Hall/kWh	16.47	15.42	15.07	15.10	14.95	15.05	15.10	16.27	15.71	16.53	15.66	16.78	15.31	14.93
Flight Deck Insley/kWh	2.32	2.15	2.05	2.13	2.09	2.05	1.86	1.99	2.48	2.31	2.50	2.62	2.65	2.99
East Dorm/kWh	12.39	7.59	6.58	7.02	6.74	6.41	12.33	18.82	30.68	28.53	26.53	28.84	30.06	21.81
Davies Dorm/kWh	7.58	5.62	5.42	5.60	5.02	6.35	4.98	10.70	7.56	5.77	6.89	6.20	6.55	6.55
West Hall/kWh	5.08	3.92	4.11	3.56	4.66	3.20	2.78	4.85	8.67	9.07	6.37	5.13	6.31	6.66
Cluster	71.42	58.97	53.42	50.48	48.88	48.10	50.13	74.96	98.73	100.43	93.65	91.60	89.29	77.21

Generate Reports and Print or Export to Excel or PDF:

Company: BLAIR ACADEMY	Meter: Annie Hall	\$/Demand: 15.0	Total kWh: 5,607.88
Location: Main Campus	Channel: kWh	\$/Usage: 0.12	Peak kW: 34.40
Date Start: 2011-04-01	Date End: 2011-04-14		Total Cost: 1,188.89



Generate Reports and Send via Email:

Send Report

Hint: Separate multiple addresses with commas.

To *

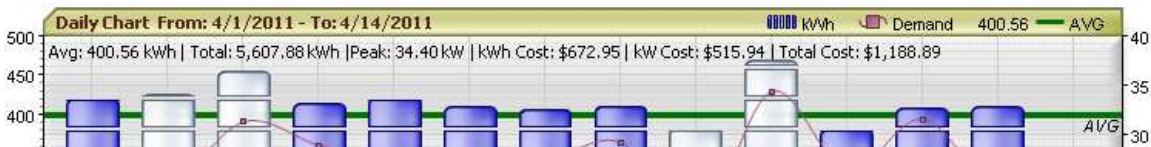
Cc

Bcc

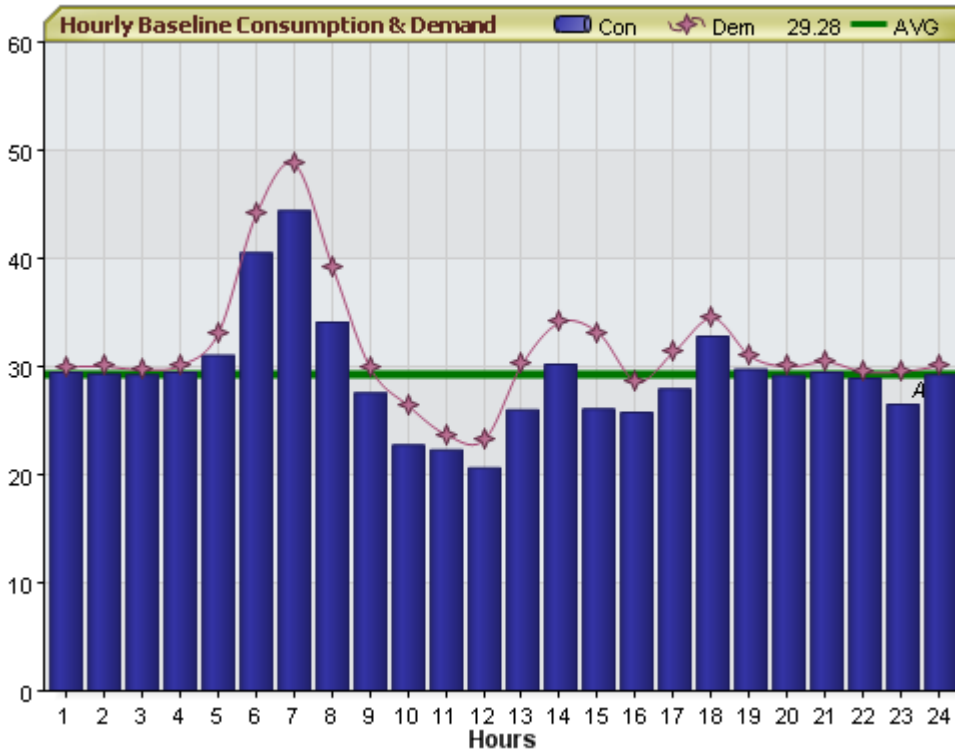
Message

Report Detail

Company:	BLAIR ACADEMY	Meter:	Annie Hall	\$/Demand:	15.0	Total kWh:	5,607.88
Location:	Main Campus	Channel:	kWh	\$/Usage:	0.12	Peak kW:	34.40
Date Start:	2011-04-01	Date End:	2011-04-14			Total Cost:	1,188.89



Generate Baselines and Chart:



Baseline Details:

Hide Baseline Details

Baseline: 3 day baseline in Feb 2010
Meter: HQ Main Service
Channel: kWh

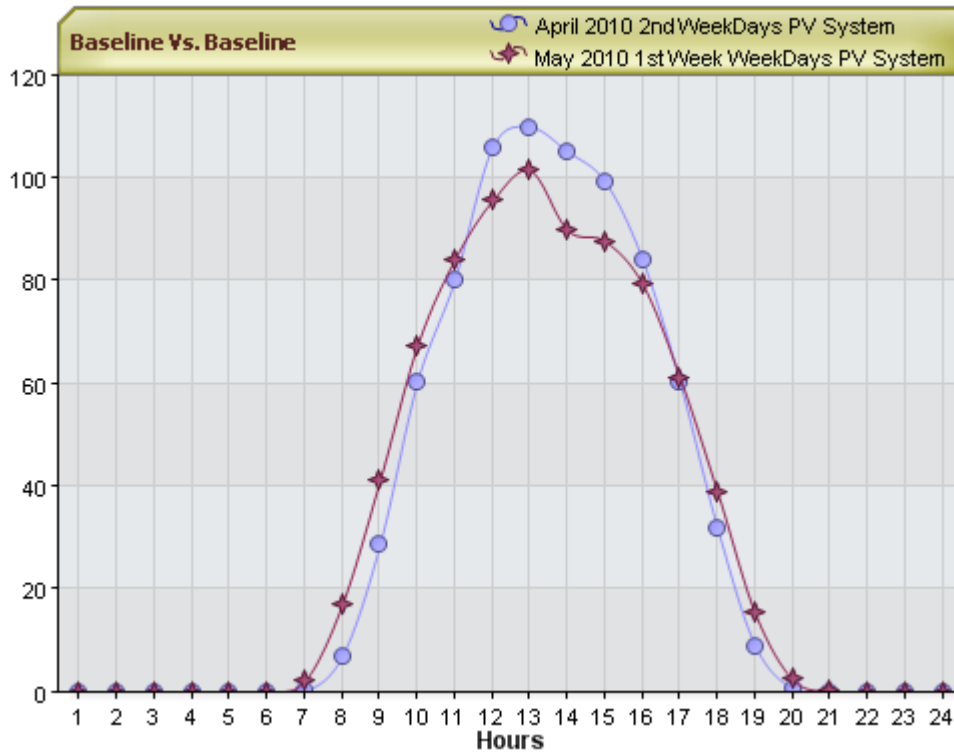
Consumption

Hour Ending	1	2	3	4	5	6	7	8	9
2/22/2010	28.87	28.89	29.33	28.60	28.68	30.95	42.78	43.40	40.39
2/23/2010	29.49	29.41	28.69	29.09	29.49	33.43	45.83	50.63	42.81
2/24/2010	30.45	29.90	29.85	30.51	30.38	32.22	41.95	33.52	11.17
Baseline	29.60	29.40	29.29	29.40	29.52	32.20	43.52	42.52	31.46

Demand

Hour Ending	1	2	3	4	5	6	7	8	9
2/22/2010	29.35	29.47	30.44	28.94	28.82	32.80	46.68	50.16	41.22
2/23/2010	30.39	30.04	29.17	29.96	31.25	37.13	48.27	51.45	45.62
2/24/2010	32.34	30.20	30.24	32.12	31.18	34.30	44.54	41.79	25.08
Baseline	30.70	29.90	29.95	30.34	30.42	34.74	46.50	47.80	37.31

Comparison Feature: (Compare usage - meter to meter, meter to baseline or baseline to baseline).



Generate Bills based on User Defined Tariff:

Show Billing Summary

Schedule / Bill	TOU Schedule 2010 PV	Company	John E. Kelly & Sons
Start Date	8/1/2010	Location	Main Office
End Date	8/31/2010	Meter Alias	HQ Solar PV System
Demand Cost	\$1,356.94	Channel Alias	kWh
Usage Cost	\$1,961.50		
PDV Cost		Process Date	9/10/2010
Total Cost	\$3,318.44		

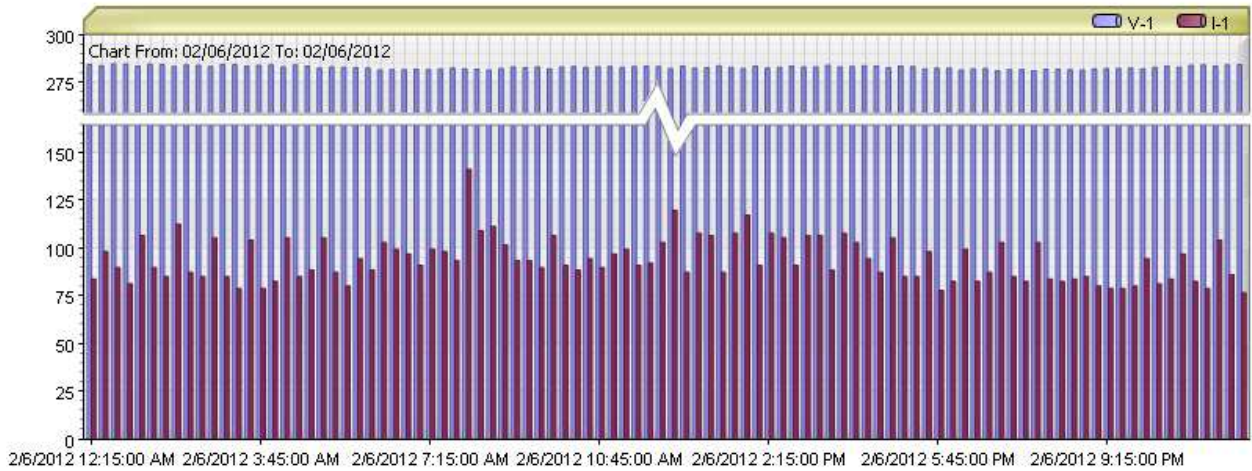
Billing Summary Detail

Billing Summary Detail: Tiers

Tariff	Tier	Tier Switch	Tier Demand	Tier Energy	Tier Demand Rate	Tier Energy Rate	Tier Demand Cost	Tier Energy Cost
TOU Multi Tier	TOU T1	5:0	0.00	0.00	\$5.00	\$0.05	\$0.00	\$0.00
TOU Multi Tier	TOU T2	6:0	122.27	19530.06	\$10.00	\$0.10	\$1,222.68	\$1,953.01
TOU Multi Tier	TOU T3	19:0	11.19	56.63	\$12.00	\$0.15	\$134.26	\$8.49
TOU Multi Tier	TOU T4	21:0	0.00	0.00	\$8.00	\$0.04	\$0.00	\$0.00
Page Total:							\$1,356.94	\$1,961.50

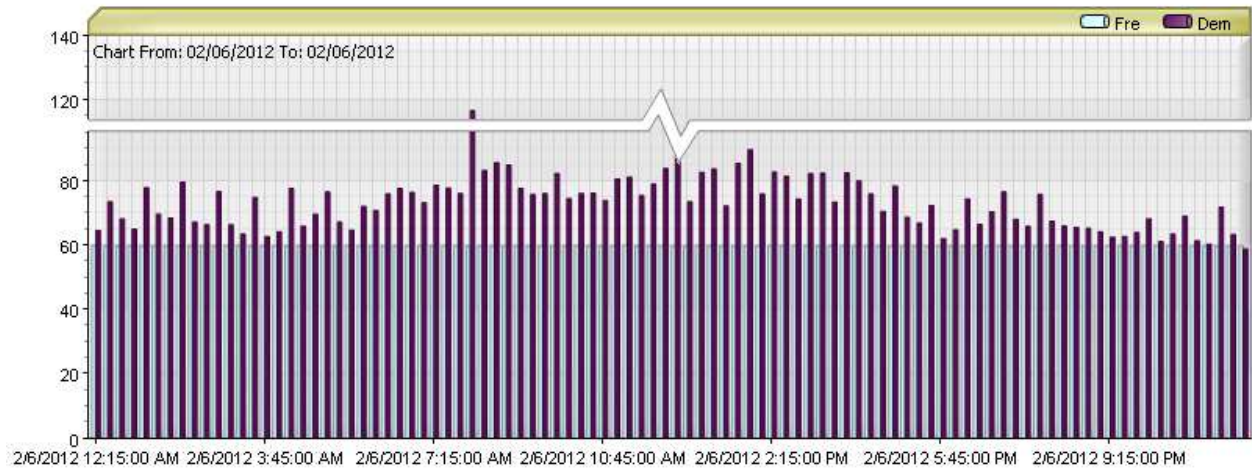
Generate Graphs for Voltage, Current, Power Factor, Frequency and Demand:

Control panel for graph generation. On the left, a dropdown menu is open, showing options: Voltage Phase A, Voltage Phase B, Voltage Phase C, and Current Phase A. To the right, there are input fields for 'Dates', 'Start' (2/6/2012), and 'End' (2/6/2012). A 'Generate Graph' button is present, along with icons for chart types (line, bar, area).



These graphs can be customized, printed, exported to MS Excel or PDF. They can also be emailed.

Control panel for graph generation. On the left, a dropdown menu is open, showing options: Power Factor Phase B, Power Factor Phase C, Frequency, and Demand. To the right, there are input fields for 'Dates', 'Start' (2/6/2012), and 'End' (2/6/2012). A 'Generate Graph' button is present, along with icons for chart types (line, bar, area).



Automated Reporting - Reports can be emailed based on your preference:

Edit Report Group

Company Energy Tracking, LLC

Group Name * Facility X

Report Type *

Error Reporting Data Reporting

LoadProfile

pVI

Frequency *

Everyday

Monday

5 hrs and 20 mins

Hint: Separate multiple addresses with commas.

Recipient (To) * support@energytracking.com

Recipient (Cc)

Recipient (Bcc)

Report Limit 0